

Power, that moves you ahead.

#astekelectricals

Follow us



ASTEK Electricals India Pvt. Ltd.

www.astekelectricals.com | info@astekelectricals.com
+91 97279 80082 / 98250 80082

Plot No. 202-204, Unity Estate, Near Batliboi Ltd.,
Bhestan, Surat - 395 023, Gujarat, India.



ASTEK Electricals India Pvt. Ltd.



SCAN QR CODE
for more information



www.astekelectricals.com

We Are



Astek Electricals India Pvt. Ltd

We introduce ourselves as one of the leading and most reliable manufacturers of electrical control panels in the nation. Based in Surat, we have made a mark for ourselves with our quality products available at the most affordable rates for maximum customer satisfaction.

We Have

cut out

Vision

Astek Electricals India Pvt. Ltd. Strives to be a world class manufacturing Organization for Electrical Control Panels and Electrical Services by imbibing the best work practices and caring for its customers, employees, society and environment."

- Achieve highest customer satisfaction.
- Become a Global Market Leader in Electrical Control Panel Manufacturing.
- Become a World Class Manufacturing Company.

Mission

- Adapting change
- Innovation
- To achieve international standard
- Adopt latest Management techniques
- Faster product introduction
- To exploit untapped market
- Expand presence in domestic market
- Implementation of Kaizen

We Provide

cut out

Power,
that moves you ahead.

Manufacturing

Design, Development & Manufacturing of HT & LT Electrical Panels
With fabrication, Painting, Component Assembly, Busbar Work &
Wiring as per customer's requirement.

1. Low Voltage (L.T.) Switchboard Type Tested as per IEC -61439. (Technology by SIEMENS)
2. Medium Voltage (M.V. / H.T.) Switch Board Type Tested as per IEC 62271-200, 62271-100.
(Technology by SIEMENS)
3. L.T. PANELS Type Tested as per IS-8623.(Partially Type Tested by CPRI)

We Serve

Engineering Services

- LiosoningWork (With Torrent Power, DGVCL, etc...)
- H.T. / L.T. Panels Installation, Testing & Commissioning.
- H.T Structure Installations.
- H.T./L.T. Cable Laying, Cable Termination, Cable Jointing.
- Cable Tray Installation.
- Fabrication Work.
- Earthing Work.
- Bus duct Installation .
- Relay Testing.
- Retrofitting Jobs.
- Industrial and Commercial Turnkey Project Work.

Journey of Astek Origin To Growth

WE THOUGHT

Inauguration of Shop on Dated 04/11/2009. We started Business as Traders of Electricals Items with a Small 300Sq. Feet Of Shop on Rent basis and capture market at Local Level. Also, We did the job of installation of Capacitor at the Load point in Various textile Factories All over Surat.

01

WE DEVELOPED

As Orders Of Control Panels Increases from Market, We Think about to manufacture Control Panel by Own and Entering in Manufacturing business. We Set up a small unit / Factory on a Rent basis of About **700 sq. feet** & We started Manufacturing Control Panels on a small Basis.

03

WE ACHIEVED

As Per Growth of Our business from Last 2 year & thought about the future Business Opportunity in the control panel from the market, We force to thing to have Big Own Factory.
1. We Buy Land of about **5000 sq. feet**.
2. "Bhumi Poojan" Ceremony to Build a new Factory Of about **10000 Sq. feet** (Almost 3 times Bigger from the Previous factory) to Concrete our Vision for Expansion of Business.

05

NEW PRODUCTS

- A. 11kv HT VCB Panels
- B. 33KV HT VCB Panels
- C. Ring Man Unit (RMU)
- D. Compact Substation (CSS)
- E. Authorised System House of Siemens For MV PANELS

07

PARTNERSHIP TO PRIVATE LIMITED

1. Changed Company from " ASTEK ELECTRICALS" to "ASTEK ELECTRICALS INDIAPVT.LTD." to have better Exposure in "CORPORATE World"
2. Licenced Channel Partner of SIEMENS for SIEPAN 8PU Low Voltage Switchboard (Technology by SIEMENS) Type tested as Per IEC - 61439 e.g. PCC, IMCC, Drawout MCCs, APFC.

09



2009

2010

2011

2012

2014

2015

2016

2017

2019

2021
GROWTH IN
PROGRESS

02

WE INITIATED

By the Time as per Previous Experience, we think about Need / Demand of Control panel in Various Industries in Surat e.g. Textile, Diamond, We started to take order of Control Panels from Market and made Panels from Other Manufacturer or Outsource. Also, We Took small Electricals Goods Supply & Installation orders on Turnkey Basis from Various Industries e.g. Textile, Diamonds, Pharma, Chemicals.

04

WE COLABORATED

As Volume of Orders Increases, We Set up another unit / Factory on Rent basis of About **1800sq. feet**. & Expand Our Business. In the Same Year, We also have a CPRI Certification of Control Panel.
1. Short Circuit at 4000A, 65KA
2. IP 65 Outdoor Panel. We were approved Vendor to supply Control panels to Various Govt. / Semi Govt. Company and hance we Expanded Our small business to Next Level.
3. ISO 9001-2008 Certified

06

WE EXPAND

Inaugration of New Factory Named "ASTEK ELECTRICALS"
1. ISO 2009-2015 Certified

08

CERTIFICATION

Renewal of CPRI Certification of LT Control Panel.
1. Short Circuit at 6300A, 75KA
2. IP 65 Outdoor Panel.
3. Temperature Rise

Our Manufacturing

Low Voltage (L.T.) Switchboard(Technology by SIEMENS) Type Tested as per IEC-61439SIEPAN-8PU.

The Low voltage Switchboards/ panels that meets the IEC 60439-3 standards, with total operational and maintenance security because of their characteristics TTA.

Developed to meet the requirements of the switchboards loads of high electrical currents and high levels of short-circuit current, with switchgear equipment and protection that meet the requirements of quality, security and performance.

Their modularity allows future expansions without having to make adjustments during assembly, the modular structure is simple to install and sizing, allowing mounting the panels by integrators duly trained by SIEMENS.

The Modular Panel Technology by SIEMENS Called SIEPAN – 8PU

SIEPAN-8PU Low Voltage Switchboards Technology by Siemens Licensed Partner built PCC, IMCC, Draw-out MCCs, APFC solutions



SIEMENS SIEPAN - 8PU design for low voltage switchboards has become an industry benchmark with proven performance for the past many decades. Designed to operate in challenging conditions of high ambient & dust 8PU low voltage switchboards have been patronized by various segments like cement, steel, refinery, oil & gas, pharma, F&B, data centers, hospitals & hotels, metro-rail projects having deployed more than 100,000 LV switchboards for maximum reliability and performance. This is Proven Technology From SIEMENS For SIEPAN 8PU® LV Switchboards is now also available Through A network of Licenced Partners Across the Country.

Range:

- Power control centers (PCC PANELS)
- Communication capable intelligent power control centers (IPCCs)
- Withdrawals motor control centers with patented Alstan® bus-bar technology
- Energy management PCCs for Plant & Building
- Motor control centers – Fuseless and with Fuse
- Intelligent motor control centers (IMCCs)
- Integrated PMCCs for Ethernet connectivity
- Automatic power factor correction panels
- All variants available with a choice of aluminum and copper for bus-bars
- Degree of ingress protection up to IP 54 for all rating.



SCAN QR CODE
for more information

Our Products

HT PANEL -Medium Voltage (M.V./H.T.) Switch Board
Type Tested as per IEC 62271-200, 62271-100.
(Technology by SIEMENS)



AEIPL is a premier system integrator offering innovative products and excellent cost effective solutions Provider & one of the leading 11kV /33 kV Indoor - Outdoor Panel manufacturer & suppliers and exporters Since 2016.

Siemens has been serving the Indian and Export market with a wide range of Medium Voltage Power Distribution Systems for more than four decades. 11/33KV Vacuum Circuit Breaker Indoor Panel that is used for the protection of transformer. VCB panels are precisely designed following strict industry parameters and are appreciated for features like superior quality and cost effectiveness. VCB Panels are also available from original equipment manufacturers (OEM) to incorporate installations or for use in repair, retrofit and upgrade projects.

11kv HT VCB Panel



Our Products

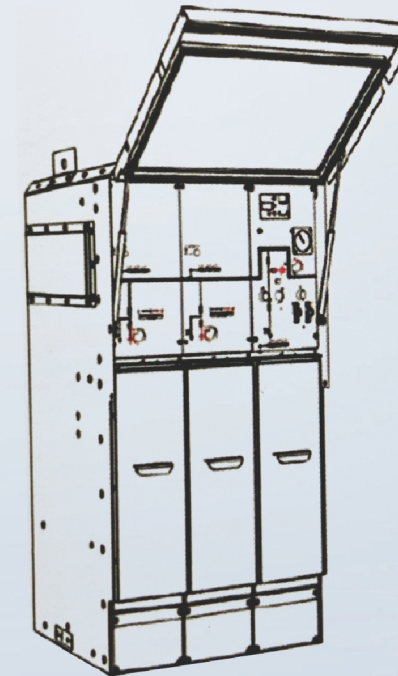
33kv VCB Panel

The **VCB Panel** Shall be metal clad shall be metal clad totally enclosed, rigid, floor standing, air insulated & cubicle type boards fitted with circuit breakers, modular construction Use for 11KV to 33KV, 3Phase, 50Hz System Manufactured **Astek Electricals India Pvt. Ltd.** is Authorized **SIEMENS** System House.



Ring Man Unit (RMU) - 8DJH ST

In an electrical power distribution system, a ring main unit (RMU) is a SIEMENS factory assembled, metal enclosed set of switchgear used at the load connection points of a ring-type distribution network. It includes in one unit two switches that can connect the load to either or both main conductors, and a fusible switch or circuit breaker and switch that feed a distribution transformer. This type of switchgear is used for medium-voltage power distribution, from 7200 volts to about 36000 volts



Compact Substation (CSS)

Equipment Details in the CSS.

- MV Switchgear
- Distribution Transformer
- Low Voltage Distribution
- Internal Connections & Accessories.

Siemens Mini-Sub (MSS) is a product from the MV Distribution product family and is designed keeping in mind the fast growing power needs of Indian cities and export market, combined with reduced urban space availability. Customization is possible to suit customer needs, applications and solutions.



Our Products

L.T. PANELS (Partially Type Tested by CPRI) Type Tested as per IS-8623.

Power Control Centre (PCC) :

The PCC, PMCC Panel shall be metal clad totally enclosed, rigid, floor standing, air insulated & cubicle type boards fitted with circuit breakers, modular construction for use on 6300A415V, 3 phase and neutral 50Hz system with a fault level of 100k Arms symmetrical.



MotorControlCentre (MCC)

The MCC Panel & Intelligent MCC Panel (iMCC Panel) shall be metal clad, totally enclosed, rigid, floor standing, air insulated, cubicle type boards fitted with circuit breakers, MPCB/ MCCB's and non-drawout & Draw out type starter module.

Our Products

Automatic Power Factor Correction Panel (LV APFC Panel)

The Contactor Based & Thyristor Based APFC Panel Included With suitable Capacitor Banks, Switchgears & Suitable APFC Relay To Maintain Power factor.



LV / HV Busduct (UP to 6300A):

Busduct Shall be metal clad, totally enclosed , indoor as well as Outdoor Type up to 6300A, 415V 3Phase and neutral 50HZ System with fault level of 50kA symmetrical with Copper or Aluminum Busbar supported on Reinforced FRP Supports, Adopter box at both ends & Flexible Jumpers for Using of connecting Transformer to main Panel.



SCAN QR CODE
for more information



AUTO DG Synchronizing Panel / AMF Panels:

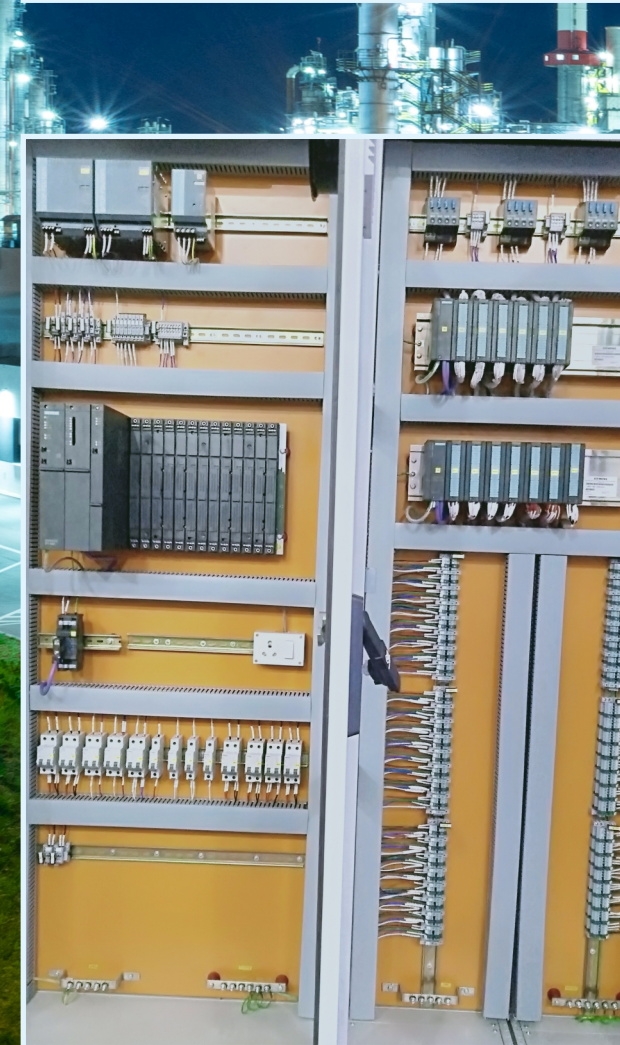
2.5KVA TO 500KVA AMF Panel Complete with Controlling With AMF Controller capable to change over the supply from Mains to DG with necessary protections. Synchronizing Panel for Synchronized D.G. to D.G. & D.G. to Main With Complete Controlling & Protection Relays.

Automation Panels:

The AC Drives & Soft Starter Panel , PLC Panel, Instrument Panel, Scada Panel shall be metal Clad, totally enclosed, rigid floor standing, air insulated, cubical type board fitted with AC Drives, PLC, HMI, Controllers, Timers and Relays and Required switchgears.

Control Desk :

Control Desk shall be metal clad totally enclosed, rigid, floor standing, air insulated & cubical type boards fitted with measuring instrument, meter , control transformer, Push button, Indications etc.



Certificate

Certificate for SIEMENS Licensed Partner for SIEPAN 8PU



Certificate

M/s. Astek Electricals India Pvt. Ltd.

Surat,
is our **Licensed Partner**,
for manufacture and assembly of SIEPAN 8PU, Low Voltage Switchboards

Valid upto September 2020


Rajesh Mangtani
SI CP LP BD


Vijay Krishnamurthy
Regional Sales – WR1

- In the context of the license agreement we grant the company named the right to manufacture, assemble and sell under its sole responsibility the **SIEPAN 8PU** type-tested low voltage switchboard.
- To ensure adherence to quality specifications, the company named maintains a quality management system. The effectiveness of this system and conformance to contractual requirement are regularly audited



Certificate for SIEMENS Authorized System House



Certificate

M/s. Astek Electricals

Surat, Gujarat,
is our **Authorized System House** to integrate Siemens make MV AIS Primary Panel [IPAN] along with Vacuum Circuit Breaker of rating upto 36kV voltage and 40kA short circuit withstand current in their Medium Voltage Air Insulated Switchboard.


Venkatesh Sarathy
General Manager
Business Administration
Medium Voltage & Systems


Manish Jaiswal
Vice President
Medium Voltage & Systems

Valid upto
1st November 2019



- In the context of partnership company named above will manufacture, assemble and sell under its own responsibility the medium voltage switchboard with Siemens make Switching Device Compartment along with Vacuum Circuit Breaker.

WE PROVIDE BEST QUALITY & SAFTY POLICY

Astek Electricals India Pvt. Ltd. is committed to achieve customer satisfaction by providing HT and LT control panels & its Services. We also committed for continual improvement in our product with help of up gradation in employee skill, utilization of latest technology & fulfilling all customer & legal requirements.

To Achieve this we are Committed to

- Sustain a leadership position through total customer satisfaction.
- Continual improvement produced quality and timely delivery.
- Undertake elimination, substitution, minimization/controls of Environmental aspects as a preferred approach followed by effective operational controls.
- Comply with current applicable quality and Environment legal and regularly requirements and other requirements as subscribed by the organization.
- Pro-actively monitor and report the incidents, unsafe acts/conditions and stop work that is unsafe.
- Optimize consumption of Resources, Conserve energy and reduce waste generation.
- Strengthen awareness , skills and competence of employees and business associates to enable them ensure good QE management through ongoing training, communication, consultation and participation.
- Strictly follow the standard operating procedure and safety practice & make every one accountable for his/her safety.
- We shall communicate this policy to all persons working for and on behalf of the organization and make the policy available to the interested parties on demand.

Our Engineering Services

We “Astek Electricals India Pvt. Ltd.” Provides Engineering Services like, Liosoning Work, H.T. / L.T. Panels Installation, Testing & Commissioning, H.T Structure Installations, H.T./L.T. Cable Laying, Cable Termination, Cable Jointing, Cable Tray Installation, Fabrication Work, Earthing, Bus duct Installation & Relay Testing, Industrial and Commercial Turnkey Project Work.



- Liosoning job with Electricity Board like Torrent Power, DGVCL getting power as per the scheduled time.

- Preparation for all necessary Electrical Installation drawings as per IS standard and rules and regulations, submitting the drawings to local Electrical Inspector, getting the installation inspected by the

- Electrical inspector and obtaining approval after clouting all works.

The Complete Electrical systems required for the new projects starting from the point of Commencement of electrical supply up to User point including HT Installation up to 22KV, cabling, earthing, plant lighting including flame Proof lighting, street and yard lighting, etc.

- Designs, Preparation of necessary drawings, installation and commissioning of complete new Projects covering Power Distribution, UPS Power Distribution. CCTV System, Access Control BMS System control cabling erection and commissioning of all types of instrumentation and control Panels.

- Any other Erection and Commissioning activity in the fields of Electrical, Electronic and Process instrumentation to meet the customer's Requirement.

- Service and Maintenance of Transformers, HT /LT Panels and HT /LT Motors.

- All kind of Instrumentation jobs including control cabling and termination, loop checks cable laying & jointing works (H. T. / L. T.)& Meter validations Etc.

- Installation and commissioning of all types / capacities of Diesel Generating sets including overhauling of the sets.

- Installation and commissioning of all types INDUSTRIALS AUTOMATION Products like AC/DC Drives, PLCs, HMI, and SCADA SYSTEMS.

Our Clients

CHEMICALS & PHARMA SECTOR

STERLING
AUXILIARIES
PVT. LTD.

Tagros
Chemicals India Ltd.

BURAKIA
GROUP

HLE Engineers
Pvt. Ltd.

SRF

Birla Cellulose
Fibres from nature

MEGHMANI ORGANICS LIMITED

MFL
MEGHMANI FINECHEM LTD.

aether
elementally innovative

MACSON
PRODUCTS

Acebright

MEGHMANI DYES AND
INTERMEDIATES LTD.

ADITYA BIRLA GROUP

Chemiesynth
Group

ANUPAM RASAYAN INDIA LTD.

SIDMAKINDIA

ENGINEERING & STEEL SECTOR

BLUE STAR

L&T Defence

A joint venture between ArcelorMittal and Nippon Steel Corporation

ArcelorMittal

NIPPON STEEL

L&T

MHPS

LARSEN & TOUBRO
LIMITED

PSP
PSP Projects Ltd.

ESSAR

GOVERNMENT, OIL & GAS SECTOR

GUJARAT GAS

ISRO

ONGC

IndianOil

GIFT
GUJARAT INTERNATIONAL
FINANCE TEC-CITY

NPCIL

FOOD & DAIRY SECTOR

Amul
The Taste of India

मिल्क प्रोड्यूसर्स
यूनिऑन
भुम्ल

NDDB
National Dairy Development Board

MOTHER
DAIRY
happy food
happy people

Sudha
GUJARAT MILK CO-OPERATIVE FEDERATION

NSL GROUP
Transforming Lives

GIA

SABAR DAIRY

omfed

IDMC
LIMITED

PROTECTS
WHAT'S GOOD
Tetra Pak

मिथिला दुग्ध
उत्पादक सहकारी संघ लि०
COMFED

HOSPITALITY & HEALTHCARE SECTOR

KIRAN
Multi Super Speciality Hospital
& Research Centre

GOVERNMENT MEDICAL COLLEGE RAIPUR
विद्ययाऽमृतमश्नुते

torrent
POWER

CHARUSAT

AURO
UNIVERSITY
Integrated & Transformational Learning

BARBARIA
Institute of Technology

OTHER SECTOR

SAWAN INDIA OVERSEAS
MANUFACTURERS & EXPORTS

GOKULANAND
Delighting the Customers

aerowalk
Caring Your Feet

Reliance Retail

DMD
DEVELOPERS
Quest For Excellence

iptg
intertape
polymer
group

PEPL
Palasa Enviro Protection Limited

SIGNODE
BOROSIL

srk
SINCE 1964

EFL
EXCLUSIVE FIBERS LTD.

ANUBHA

SARASAR